



BELARUS WATERSKI AND WAKEBOARD FEDERATION

## **Information Bulletin**

**IWWF E&A OPEN U-15 U-19 SENIOR  
EUROPE CHAMPIONCHIP**

**06-08.09.19 - OPEN**

**12-14.09.19 – U15, U19, SENIOR**

## 1. MINSK, HOST CITY

The City of Minsk welcomes 2019 E&A EUROPE CHAMPIONSHIP participants!



*The Svisloch River and the Trinity Suburb, Minsk*

**Minsk city is the capital of Belarus. It is the political, economic, scientific and cultural center of the country and the administrative center of the Minsk region.**

Minsk is the most economically developed city in Belarus. There are **1.982,4 million inhabitants in Minsk**, and the population is constantly growing.

### Transportation network in Minsk

Minsk is located on the main transportation routes connecting Western Europe and the East, regions of the Black Sea coast and the Baltic States.

Highways connect Minsk with the largest cities in Belarus: Orsha, Vitebsk, Molodechno, Brest, Slutsk, Mogilev and Gomel.

Minsk has a **large railway network** which connects Brest, Moscow, Vilnius and Gomel. There is a national airport in the capital.

The city has a very good public **transportation system**. You can easily reach any place by bus, trolleybus or tram. Minsk, like most big European cities, has a fine **metro system**.

**MORE INFORMATION ABOUT BELARUS & MINSK:** [www.belarus.by](http://www.belarus.by)





## 2. VISA INFORMATION

For all European Countries except Gibraltar and Kosovo who plan to travel to Belarus **by plane (Minsk National Airport)** and stay in Belarus **no more than 30 days (including arrival and departure days)** **do not need visa**. A valid passport or other document permitting foreign travels, money (equivalent to at least two base amounts for each day of stay in the foreign currency or Belarusian rubles), medical insurance in the amount of at least €10,000 operational in Belarus will be needed for the visa-free entry (can be purchased in the airport).

For more information visit:

[https://www.belarus.by/en/press-center/news/belarus-extends-visa-free-entry-to-30-days\\_i\\_0000083184.html](https://www.belarus.by/en/press-center/news/belarus-extends-visa-free-entry-to-30-days_i_0000083184.html)

Any participants who would require visas should contact Alexander Isaev (isaevski@mail.ru) to get the necessary invitation letter.





### 3. AIRPORT

Minsk National Airport is located in 28 km from Minsk. The airport has connections with all major European cities.

### 4. CURRENCY OF BELARUS

Belarusian rouble (Br) (100 cents)

The Rate is 1 EURO≈2,5 Br

MasterCard and Visa cards widely accepted everywhere.

### 5. WEATHER CONDITIONS

The average day temperature in the start of September in Minsk +20-25°C.

## 6. TRANSPORTATION

Everyone can choose from the below:

1. Rent the official transfer
2. Rent the car
3. Taxi

### 1. Rent an official transfer **Cash**

We will organize transfers with the following opportunities:

- a. Airport – Lake (to leave bags) – Hotel = 12 euro/person/round
- b. Lake – Hotel or Hotel – Lake (1 ticket) = 2,5 euro/1 way

**To order airport transfer, please send your request to [isaevski@mail.ru](mailto:isaevski@mail.ru), you will find the form in the end of bulletin.**

### 2. Rent a car

On the 1st floor at the airport you can find multiple rental companies.



auto-sale.by



sixt.by

**Europcar**

europcar.by

and other.

### 3. Taxi

Taxi cost is approximately 1,5 Br/km. (in the city) to go to the lake or from the airport (70 km) prices will be 3 Br/km. **In the city its cheap and more comfortable to travel.**

Minsk has a well-developed public transportation network: metro, bus, trolleybus. The cost of one trip by metro is 0,65 Br (≈0,26 euro), as well as one trip by bus, trolleybus, tram (tickets can be purchased from a driver).

## 7. ACCOMMODATION

**All the participants will have choices to have accommodation in the Hotel «Victoria Olimp Hotel» (four stars) or at the lake.**

**Hotel accepted Cards and Cash**

VICTORIA OLIMP Hotel

Minsk, 220020, Pobediteley avenue, 103

Tel. +375 17 308 7777

Site: <http://olimphotel.by/>

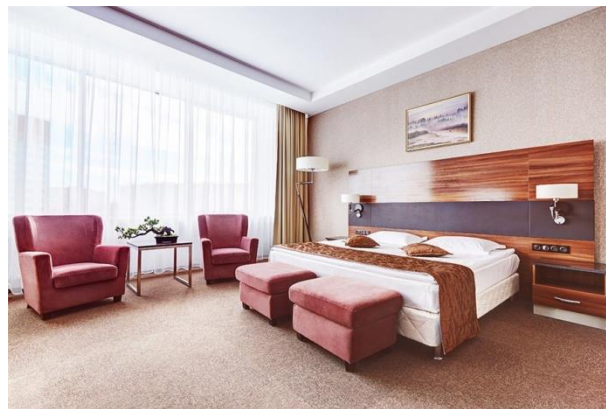


The prices for the hotel:

- |                  |  |
|------------------|--|
| Single room      | – 60 Euro (with breakfast)               |
| Double room      | – 85 Euro (with breakfast for 2 people)  |
| Double room maxi | – 130 Euro (with breakfast for 3 people) |



Single room



Double room

The prices indicated above are special prices for Belarus Waterski and Wakeboard Federation for the event. **We have 50% discount for our competition (prices include the discount).**

Online booking with special prices will be possible by using booking form for the hotel.  
You may find the form at the end of this document. Please send it to email [reservation@olimphotel.by](mailto:reservation@olimphotel.by)  
and copy to [isaevski@mail.ru](mailto:isaevski@mail.ru)

## Accommodation at the lake **Cash**

Our lake has 2 buildings with multiple rooms and 2 houses to rent entirely which are located in 300 meters from the starting dock. Right by the lake, in just 350 meters there is a nice restaurant where you can have a delicious breakfast, lunch, or diner.



Building with the rooms available. Toilets and showers are for the entire floor.



Room #201 for 4 persons 60 euro per room for 1 night



Room #202 for 5 persons 75 euro per room for 1 night



Room #203 for 2 persons 30 euro per room for 1 night



Room #204 for 3 persons 45 euro per room for 1 night



Room #205 for 3 persons 45 euro per room for 1 night

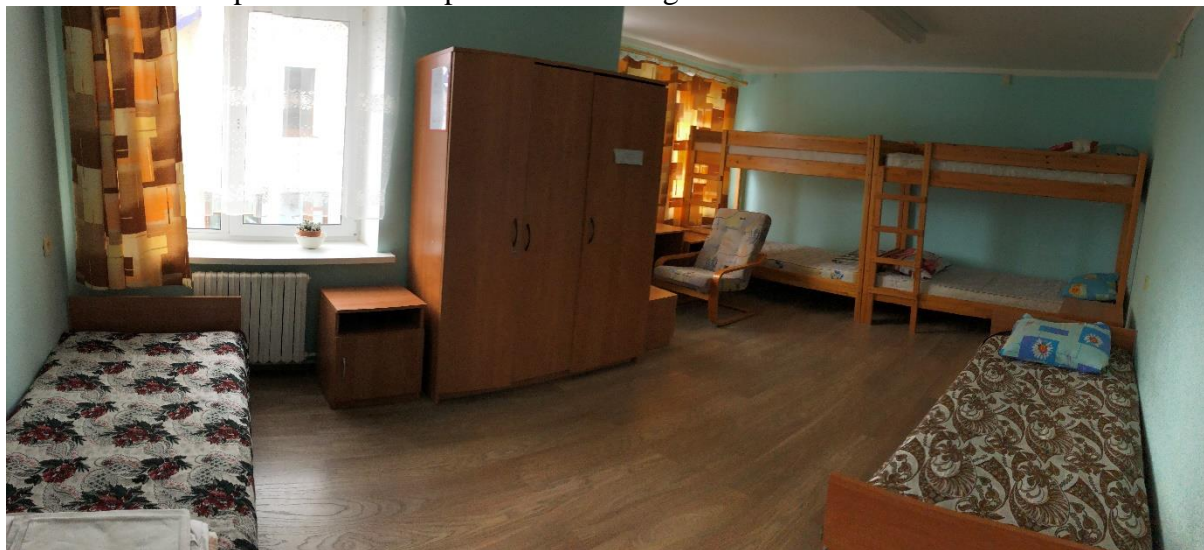


Room #206 for 3 persons 45 euro per room for 1 night





Room #207 for 6 persons 90 euro per room for 1 night



Room #102 for 3 persons 45 euro per room for 1 night



Room #103 for 3 persons 45 euro per room for 1 night



Room #105 for 3 persons 45 euro per room for 1 night



Room #108 for 3 persons 45 euro per room for 1 night



Room #109 for 4 persons 60 euro per room for 1 night





Houses to rent entirely: House #1. Toilets and shower are on each floor. Kitchen, billiard, terrace, BBQ. Ten people may comfortably stay in the house, however we won't limit the number of people to stay in the house – it's up to you.

**Price 400 euro per house per night.**









Houses to rent entirely: House #2. Toilets and shower are on each floor. Kitchen, billiard, terrace, BBQ. Eight people may comfortably stay in the house, however we won't limit the number of people to stay in the house – it's up to you.

**Price 250 euro per house per night.**



**To order accommodation, please send your request to [isaevski@mail.ru](mailto:isaevski@mail.ru) form you will found in the end of bulletin.**

## **8. TRAINING Card or Cash**

Possible to book training time after 3pm or 4pm depending on a day (on 6,7,8,12,13,14 of September) for skiers who won't compete during specified days. (Example: Kids may have a training on the same day once Open Championship tournament day is over).

From 25.04.2019 till 30.08.2019 – 2 Euro per min.

From 31.08.2019 till 15.09.2019 – 150 Euro per 1 hour or 45 Euro per 15 min.

**To order a training, please send your request to [isaevski@mail.ru](mailto:isaevski@mail.ru) you may find the form in the end of bulletin.**

## **9. ENTRY FEE Bank transfer**

The Entry Fee is EUR 160.00 per skier Open Group

The Entry Fee is EUR 160.00 per skier Senior Group

The Entry Fee is EUR 120.00 per skier Juniors Groups

**LAST DAY TO PAY THE ENTRY FEE IS: 05<sup>th</sup> SEPTEMBER FOR OPEN, 11<sup>th</sup> SEPTEMBER FOR JUNIOR & SENIOR !!!!!**

### **Payment details (Entries)**

Please request an invoice from the Organizer and ensure you correctly state the invoice number when making payment. Please note: payments WITHOUT an invoice number may not be recognized by a recipient.

**IMPORTANT – FEDERATIONS ARE RESPONSIBLE FOR ALL BANK CHARGES**

### **EUR**

Beneficiary : Belarus Water Ski and Wakeboard Federation

Beneficiary address : office 20, Promishlenniy lane 10, Minsk, 220075, Republic of Belarus

Account: BY75BLBB30150100148105001003

Bank of beneficiary: BELINVESTBANK

SWIFT CODE: BLBBY2X

Bank address : 11, Kollektornaya street, Minsk, Republic of Belarus

## **10. INTENTION TO ENTER**

The **INTENTION TO ENTER** forms must be filed:

E&A Open Category **BY 06<sup>th</sup> July 2019**

E&A Age Category **BY 12<sup>th</sup> JULY 2019**

**Please send your intention to enter to [isaevski@mail.ru](mailto:isaevski@mail.ru) and [martin.graw@web.de](mailto:martin.graw@web.de) .**

## **11. FINAL ENTRY**

The **ENTRY FORM** must be filed:

E&A Open Category **BY 22<sup>th</sup> August 2019**

E&A Age Category **BY 28<sup>th</sup> August 2019**

**Please send your Entry Form to [isaevski@mail.ru](mailto:isaevski@mail.ru) and [martin.graw@web.de](mailto:martin.graw@web.de) .**



## **12. DOPING CONTROL**

In accordance with the IWWF Anti-Doping Rules, Doping controls will be conducted during the competition. By entering this competition, all athletes agree to be subject to doping control.

### **ATHLETE CONSENT FORM**

The IWWF Athlete Consent form must be signed by all participants (or their parent or guardian if under 18) and be retained by the organisers for at least one year.

**The form you will found in the package of documents for these competitions.**

### **ATHLETE INFORMATION DOCUMENT**

This information document must be posted on the competition notice board during the whole time of the competition.

**The information document you will found in the package of documents for these competitions.**

### **DOPING CONTROL VIDEO**

Athletes and Officials can learn about the Doping Control process from the video at this link  
<https://www.wada-ama.org/en/resources/education-and-prevention/doping-control-process-for-athletes>

This video is available in several languages which show when the link is opened.

Visit the IWWF Anti-Doping page at this link where ALL the information about the AD process is shown. <http://iwwf.sport/athletes/anti-doping/>

## **13. BANQUET**

The final night party will be held in the restaurant of the official hotel. DJ and Singer will be present at this final night party. Variety of food and drinks.

Price: 50 Euro / person.

## **14. LUNCH**

It is possible to order lunch. Lunch includes: soup, main course (main course), salad, choice of drink, fruit.

Price: 10 Euro / person / 1 lunch.

## **15. HOMOLOGATION**

E&A European Championship will be RC Homologation level.

We have 5 pole cable.

## **16. INSURANCE**

In accordance with the sports law of the Republic of Belarus, every athlete who participates in competitions **MUST** have medical insurance. Team captains are required to provide health insurance for competitors when registering athletes.

## 17. PROGRAMME<sup>1</sup>

<b>6<sup>th</sup> September, Friday</b>	<b>09:00 – 12:00</b>	<b>Official Training</b>
	<b>12:00 – 13:00</b>	<b>Lunch</b>
	<b>13:00 – 16:00</b>	<b>Competition</b>
	<b>16:00 – 17:00</b>	<b>Opening ceremony</b>
<b>7<sup>th</sup> September, Saturday</b>	<b>09:00 – 12:00</b>	<b>Competition</b>
	<b>12:00 – 13:00</b>	<b>Lunch</b>
	<b>13:00 – 15:00</b>	<b>Competition</b>
<b>8<sup>th</sup>, September, Sunday</b>	<b>09:00 – 12:00</b>	<b>Competition</b>
	<b>12:00 – 13:00</b>	<b>Lunch</b>
	<b>13:00 – 15:00</b>	<b>Competition</b>
	<b>16:00</b>	<b>Bus to official hotel</b>
	<b>17:00 – 18:00</b>	<b>Medal ceremony and closing ceremony</b>
	<b>19:00</b>	<b>Banquet</b>

<sup>1</sup> This is provisional programme.

We will manage all issues with transportation and packaging skis at 8<sup>th</sup> of September.

<b>12<sup>th</sup> September, Thursday</b>	<b>09:00 – 12:00</b>	<b>Official Training</b>
	<b>12:00 – 13:00</b>	<b>Lunch</b>
	<b>13:00 – 16:00</b>	<b>Competition</b>
	<b>16:00 – 17:00</b>	<b>Opening ceremony</b>
<b>13<sup>th</sup> September, Friday</b>	<b>09:00 – 12:00</b>	<b>Competition</b>
	<b>12:00 – 13:00</b>	<b>Lunch</b>
	<b>13:00 – 15:00</b>	<b>Competition</b>
<b>14<sup>th</sup>, September, Saturday</b>	<b>09:00 – 12:00</b>	<b>Competition</b>
	<b>12:00 – 13:00</b>	<b>Lunch</b>
	<b>13:00 – 15:00</b>	<b>Competition</b>
	<b>16:00</b>	<b>Bus to official hotel</b>
	<b>17:00 – 18:00</b>	<b>Medal ceremony and closing ceremony</b>
	<b>19:00</b>	<b>Banquet</b>

---

<sup>1</sup> This is provisional programme.

We will manage all issues with transportation and packaging skis on the 14<sup>th</sup> of September.



\*Use different form for each competition.

\*Don't forget to write E&A form.

\* If you choose a hotel, please make sure to submit a different form for the hotel. Please send it to a hotel and [isaevski@mail.ru](mailto:isaevski@mail.ru)

**\*ALL THE FORMS MUST BE SENT TO [isaevski@mail.ru](mailto:isaevski@mail.ru)**

### BOOKING FORM

Team Name:			
Competition: (open/Junior)			
List of Participants: (add ho is ho) (skier/team captain/coach)	1. 2. 3. 4. 5. 6.	7. 8. 9. 10. 11. 12.	
Arriving flight Info:			
Departure flight Info:			
Transfer Info: (chose the type)	Taxi:	Rent a Car:	Official: A) B) (Please wrote quantity of people and ways)
Accommodation: (chose the type)	Hotel: (use the hotel form)	Lake: (chose the room/house #) # # # # #	
Training: (chose the day and quantity of hours)	(Day/Hours) ...../.....    ...../.....    ...../.....    ...../.....		
Entry Fee: (+ don't forget to use E&A form)	(wrote the quantity of skiers) Open: U-15: U-19: Seniors:		
Banquet: (add how many people)			
Lunch: (add how many meals)			

\*Use different form for each competition.

\* Send it to hotel [reservation@olimphotel.by](mailto:reservation@olimphotel.by) and [isaevski@mail.ru](mailto:isaevski@mail.ru)

### HOTEL BOOKING FORM

Team Name:				
Competition: (open/Junior)				
List of Guests:	#	Name/Last Name	Dates of stay	Room type
	1.			
	2.			
	3.			
	4.			
	5.			
	6.			
	7.			
	8.			
	9.			
	10.			
	11.			
	12.			
	13.			
Arriving Info:				
Departure Info:				
Notes:				